

ST. LOUIS COMMUNITY ICE CENTER

MARYLAND HEIGHTS, MISSOURI



Opening by September 2019, **THE ST. LOUIS COMMUNITY ICE CENTER** in Maryland Heights, Missouri will be a place where kids and adults come to learn and participate in ice sports and a destination for local, national, and international sporting events. *There will no comparable facility within 500 miles!* Indeed, **THE ST. LOUIS COMMUNITY ICE CENTER** will be the first facility – **anywhere** – in which all levels of hockey share training and ice facilities.

Momentum for this facility is growing due to:

- rapid youth hockey expansion and the growing success of other ice sports;
- the phasing out of multiple ice surfaces in the region; and
- the growing popularity of the St Louis Blues and the team's strong support for youth hockey.

PROJECT HIGHLIGHTS:

- 275,000 square feet of ground floor and mezzanine space containing 4 ice sheets, including outdoor rink.
- Shared training center including medical, taping, pre- and post-therapy injury rooms and weight training.
- A skills training facility where athletes can work on their shooting, skating or goaltending on synthetic ice.
- Beyond the construction phase, **THE ICE CENTER** will drive positive economic impact and job creation.

DELIVERING A HIGH QUALITY PROJECT: A recently formed non-profit organization – the St. Louis Legacy Ice Foundation – is shepherding this \$78.2M project. An elite external team has designed and will develop the facility on time and on budget. Conversations with operators of comparable ice facilities at the local and national level, coupled with leadership and guidance provided by experts in the fields of youth sports, sports medicine, project finance, and fundraising, have shaped a sustainable plan for managing the Ice Center and its internal programming.

BENEFITING THE PUBLIC:

With facilities and values in sync with the St. Louis Blues' *Hockey STL 2020 Campaign*, **THE ST. LOUIS COMMUNITY ICE CENTER** is just the beginning of a regional movement to engage more youth in skating and ice sports at an earlier age. Its development is a tangible signal that kids will have the support and resources necessary to continue in these sports,



heralded for fostering discipline, leadership and team skills. Through this wonderful complex, our community will cultivate healthier youth, stronger athletes, active citizens, and sports fans.

FUNDING THE PROJECT: THE ST. LOUIS COMMUNITY ICE CENTER has in place an appropriate, innovative financial structure to ensure that the \$78.2M development will be successfully funded. Project funding sources include:

- State and local government, including the City of Maryland Heights, St. Louis County, and the State of Missouri;
- The St. Louis Blues and Blues For Kids Foundation;
- Corporate, foundation, and individual donors, of both financial resources and in-kind materials, goods, and services;
- Youth ice sport networks (parents, athletes, and coaches) across the region, including those at the collegiate, high school, and younger levels.

SUSTAINABLE SUCCESS: While the immediate focus of the St. Louis Legacy Ice Foundation is to ensure the facility's construction and operation, in the long-term, the Board is committed to reaching beyond this flagship facility to build a stronger platform for education and participation in ice sports across the region.

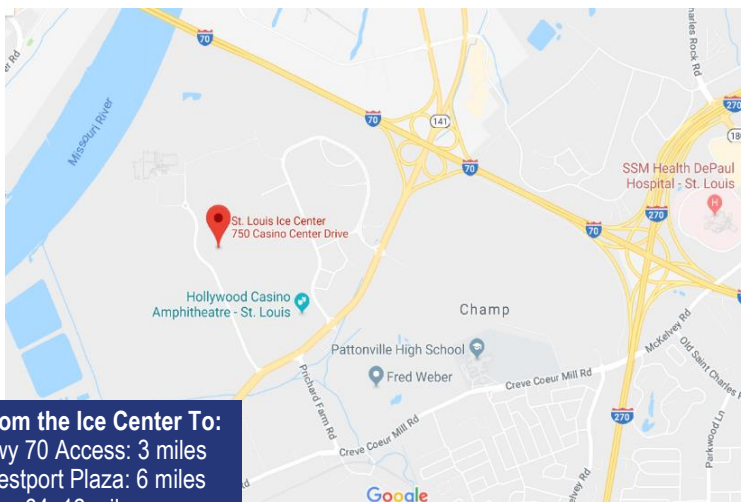
AN ACCESSIBLE COMMUNITY RESOURCE: The community value provided through THE ST. LOUIS COMMUNITY ICE CENTER is, in part, because of its accessibility in design, capacity, and location. With attention given to the necessities of special needs athletes, as well as girls, and women, THE ICE CENTER is a game-changer. Additionally, since the majority of ice sport facilities are located in the southern and western areas of our region, the ICE CENTER will introduce the game of hockey – and other ice sports – to many children for the first time.

The Maryland Heights location of THE ST. LOUIS COMMUNITY ICE CENTER brings a state-of-the-art facility to north city and county communities. The land for the project is located in an area known as the Maryland Park Lake District (MLPD), the largest undeveloped area within St. Louis County. The MLPD has been long envisioned as a regional destination for family entertainment and recreation.

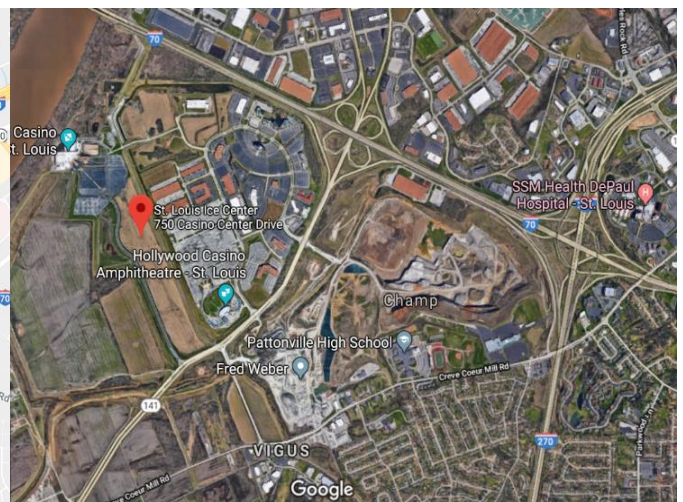
PLUS! MISSOURI TAX CREDIT OPPORTUNITIES

The St. Louis Legacy Ice Foundation is approved by the State of Missouri's Department of Economic Development (through the Missouri Development Finance Board - MDFB), to make tax credits available to eligible people and businesses in Missouri. Credits allow qualified donors to reduce their Missouri tax liability by 50% of their total contribution. **With recent tax reform, tax credits can provide a much greater after-tax benefit compared to many alternative options.** See illustration below and consult your advisor.

Donation Amount	\$10,000
Missouri Tax Credit (50% of gift)	\$5,000
Federal Inc. Tax Deduction (32%)	\$1,600
State Inc. Tax Deduction (6%)	\$600
Donor Net Out-Of-Pocket Cost (est.)	\$2,800



From the Ice Center To:
 Hwy 70 Access: 3 miles
 Westport Plaza: 6 miles
 Hwy 64: 12 miles
 Lambert Field: 8 miles



JOIN US: We are here for the long haul, anchored by a diverse array of advisors and supporters and seek to secure leadership donations from others of vision who recognize the need for this facility to promote education, and the development of ice sports and drive economic development. **All gifts are tax-deductible** to the extent allowed by law. Learn more and pledge your support (contact Patrick Quinn at 314.619.9929 or PQ@legacyice.org) or connect using our contact and giving forms found online at: www.LegacyIce.org.